

SR-07J

FACIAL LIFTING DEVICE

LED Care

Vacuum Suction

Electrical Muscle Stimulation



Instant firming



Smooth skin



Wrinkle reduction



Radiant glow

SR-08P

SERUM ACTIVATION SYSTEM

Electroporation

EMS

Heating Function

Red Light Care



Instant firming



Deep nourishment



Brighten skin tone



Smooth fine lines

FBB9A

SMART RELIEF MASSAGER

LED Care

EMS Micro-current

Handy-alike massaging



Firm contours



Smooth fine lines



Reduce puffiness



Brighten skin tone

FBD1

RF Anti - Aging Device

RF Wave Tech for Deep Collagen Rebuild & Youthful Lifting
(Pre - FDA Submission).

- **R & E Mode**: Boost collagen, fight wrinkles
- **EC Mode**: Lifts & firms skin instantly
- **RC Mode**: Refines texture & restores radiance for glowing skin



FCB1

Mini Travel Kit

Deep cleansing, gentle infusion — anytime, anywhere.

- Deep Cleansing, gentle Infusion
- Ultra-Fine silicone bristles, soft cleanse
- **Ultrasound + Warmth + Red Light** for Enhanced Skincare
- IPX7 waterproof



► Back side for more

FCB5

Intelligent Cleansing System

2 panels to cover **daily key demands**.

- **Cleaning mode**: soft silicone tips & high-freq vibration
- **Lead-in mode**: Ionic & Tepidity
- Portable charging case
- IPX7 waterproof



FCB11A

Ultrasonic Skin Prep

Red Dot Award-winning exfoliation.

- **Scrubbing mode**: removing dead cells
- **Moisturizing mode**: improving skin transparency
- **Lifting mode**: improving sagging skin
- IPX5 waterproof



Targeted concerns:



•Lower eyelid sagging



•Midface laxity



•Jawline contour

Targeted concerns:



•Skin dullness



•Initial wrinkles



•Ineffective skincare

Targeted concerns:



•Screen-Induced tension



•Muscle discomfort



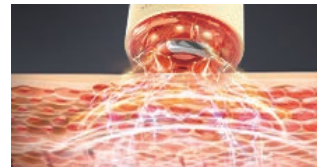
•Dullness

Tech-driven solutions:



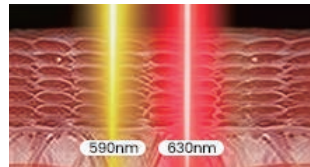
1. Vacuum suction:

- ✓ Redistributes facial fat
- ✓ Slims double chin & cheeks



2. EMS micro-current:

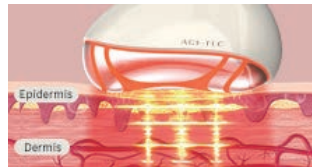
- ✓ Triggers muscle exercise
- ✓ Smooths wrinkles & firms skin



3. Dual LED light care:

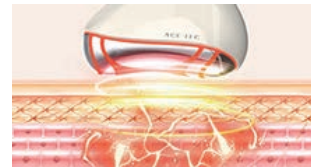
- ✓ Red: enhances skin elasticity
- ✓ Yellow: calms redness & sensitivity

Tech-driven solutions:



1. Electroporation:

- ✓ Boosts skincare absorption



2. EMS technology:

- ✓ Stimulates facial muscles for lifting



3. Red Light & Heating:

- ✓ Improves circulation, reduces puffiness, and stimulates collagen

Tech-driven solutions:



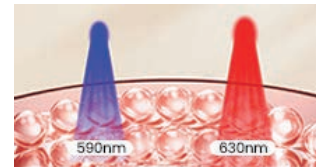
1. Expert pinch & knead:

- ✓ Pinch-roll motion dissolves muscle knots



2. EMS technology:

- ✓ Contour lifting, skin firming



3. Red/Blue led care:

- ✓ Stimulates collagen, neutralizes dullness



Founded in 2003, Guangdong Ace-Tec Co., Ltd. is a National High-Tech enterprise, focusing on providing **ODM / OEM** service (customized products) for beauty and personal care devices.

Driven by leading technology, supported by reliable quality system and full supply chain management, Ace-Tec is honored to be strategic partner with more and more leading brands.

22⁺
Years

50⁺
R&D

300⁺
Patents

18
Production Lines

20
Mold Machines

28
Injection Machines



www.ace-tec.com

Guangdong Ace-Tec Co., Ltd.

✉ sales@ace-tec.com

☎ +86 769 8301 4680

📍 420 Jinxing Road, Xixi Industrial Zone, Liaobu Town, Dongguan City, Guangdong Province, China, 523400.

SR-08H

MICRO-CURRENT COMB

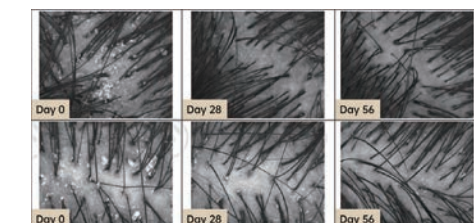
Red LED Light Negative Ionic EMS Microcurrent Massaging Vibration



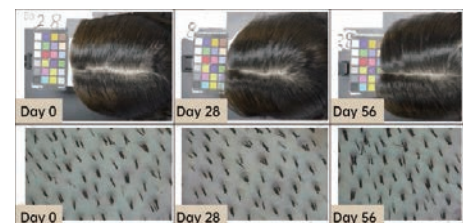
Proven & Effective:



• Dandruff & Oil - Significantly Reduced
Dandruff in 28 days ↓ 35%
56 days ↓ 62.5%



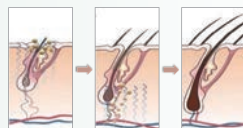
• Narrower Parting, Less Hair Fall
Hair fall in 28 days ↓ 26.32%
56 days ↓ 47.37%



NEW SR-08G Micro-current Comb

Awaken follicles to prevent hair loss.

- ▶ **Micro-current:** Activates dormant follicles
- ▶ **Red LED light + Ionic** to reduce frizz
- ▶ **Massaging Vibration:** Boosts scalp circulation
- ▶ IPX5 waterproof



SR-02L

FULLWAVE SCALP MASSAGER

EMS Massaging Vibration Red LED Light



NEW SR-09E Pocket Hair straightener

Cordless & Portable – smooth in one stroke.

- ▶ **Dual Temperatures:** 140°C (284°F) / 180°C (356°F)
- ▶ **Color-Changing Plate:** Visual temperature control
- ▶ **2000W Negative Ions:** Neutralizes static



NEW SR-12L SmartClaw Scalp Massager

Deep purifying system for stronger, fuller hair.

- ▶ **4D Kneading + EMS:** Invigorates blood flow
- ▶ **Red LED light:** Strengthens hair roots
- ▶ Facial-Scalp linkage anti-sagging system
- ▶ Dual Attachments: Precision massage & care



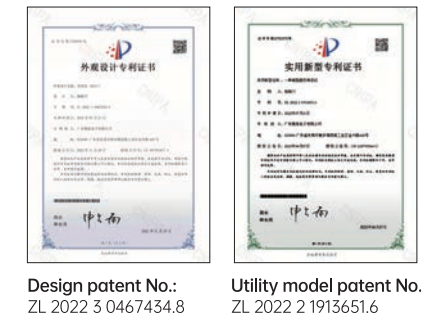
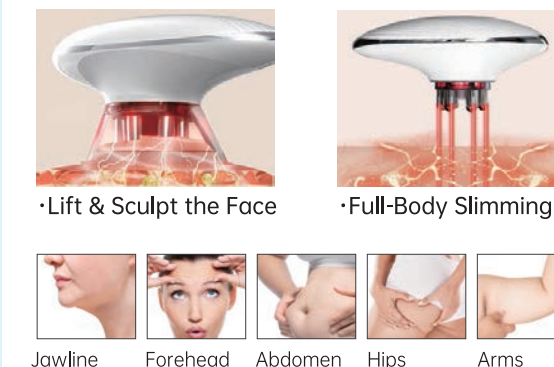
SR-07K

EMS SUCTION

EMS Red LED Lights Vacuum Suction Heating Function



Facial Care & Body Slimming:



BCE1 EMS Suction

- ▶ 3 technologies utilized:
Suction, burning deep fat
Heating, Enhance fat burning
EMS, reshaping body
- ▶ 2 attachments available

SR-07H SculptPump

EMS-Enhanced rolling system.

- ▶ **Vacuum & EMS** spot fat blaster
- ▶ Lymphatic drainage & skin smoothing
- ▶ **Red LED light:** Boosts circulation
- ▶ 2 attachments available



NEW

FBB2 EMS Body Sculptor

Large-Area EMS treatment for enhanced efficiency.

- ▶ **EMS:** Targeted toning for waist-abdomen-hips-thighs
- ▶ **Red LED light:** Stimulate collagen production



▶ Back side for more

SR-08J EMS Butt Shaper

In-Bath body shaping - effortless butt lifting.

- ▶ **Butts mode:** Shapes glutes
- ▶ **Waist mode:** Relaxes back muscles
- ▶ Variable-frequency EMS tightening system
- ▶ Waterproof design (IPX7) - bathtub safe
- ▶ Japan-Korea bestseller



SR-12D SpinCrush Roller

Deep tissue massage for full-body relaxation.

- ▶ Provide turbospin full-body massage
- ▶ Myalgia relief & dermal tightening system
- ▶ IPX7 waterproof



ACE-TEC

THE TRUSTED PARTNER OF
GLOBAL BEAUTY BRANDS

SINCE · 2003

